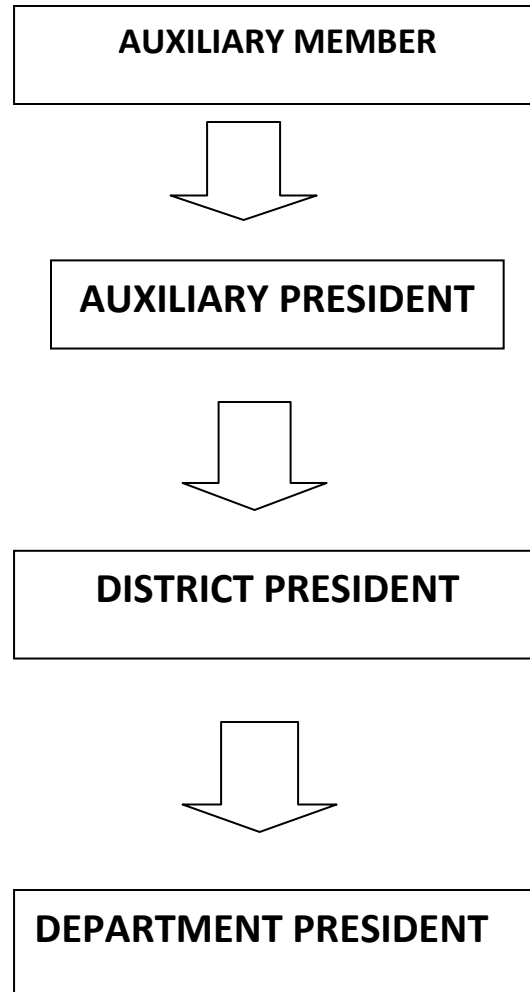


VFW AUXILIARY CHAIN OF COMMAND



1. Member contacts his/her auxiliary president with their issue/complaint
2. If auxiliary presidents needs advice on how to handle issue he/she contacts District President
3. If District President needs advice on resolving issue he/she contacts Department President

AUXILIARY TREASURES HAVING QUESTIONS OR ASSISTANCE NEED TO CALL

THE DEPARTMENT TREASURER NOT NATIONAL HEADQUARTERS

***MEMBERS NEEDING HELP WITH THEIR MALTA ACCOUNT NEED TO USE THE ONLINE HELP
AVAILABLE IN THE MEMBERS ACCOUNT***